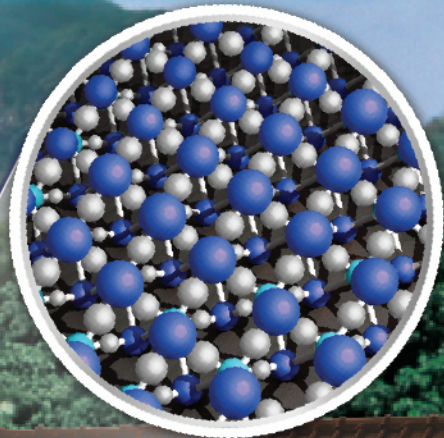


SCG Fiber Cement Roof Tiles

Roman Tiles Series Great strength and durability

NEW FORMULA

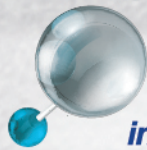
FIBER HYBRID+ 



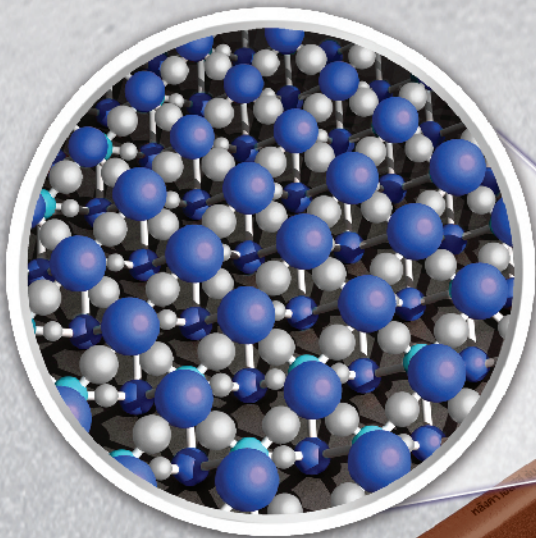
Key Benefit : SCG Fiber Cement Roof Tiles, Roman Tiles Series

NEW FORMULA

FIBER HYBRID+



Advance Nano technology & greatest innovation fully integrates SCG Portland Cement with special cellulose fiber resulting in higher strength and durability




High strength

- By new Nano technology **FIBER HYBRID+** creates every tile to be **more strength and durable**

Long lasting color

- By improved formula integrates color molecule and fiber cement and special 2 layers coating makes long lasting color

High quality

- Passed Thai Industrial Standards (1407-2540)  and trustable by SCG experts and 70th years experience

Safety

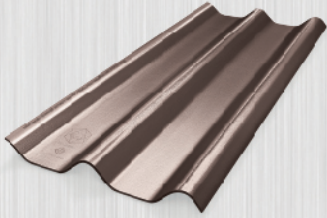
- Non asbestos, low heat and noise

Technical Specification

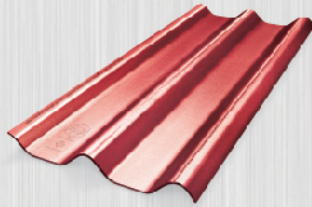
Description	Size (width x length) cm.	
	50 x 120	50 x 150
Thickness (mm.)	5.5	5.5
Weight (kg./pc)	6.7	8.4
Piece/ Sqm.	2.2	1.7
Slope (degree)	15-40	15-40
Distance of purlin (cm.)	100	130
Standard	Thai Industrial Standards 1407-2540	

Shiny Pearl Color Series

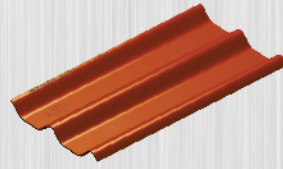
Standard Color Series



Shiny Pearl Brown



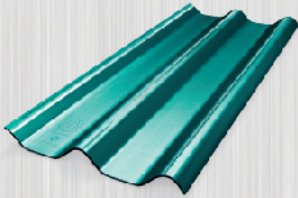
Shiny Pearl Red



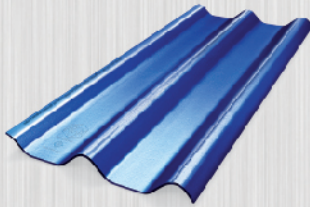
Brown



Green

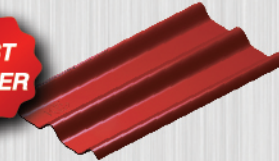


Shiny Pearl Green

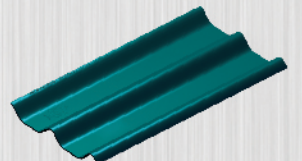


Shiny Pearl Blue

**BEST
SELLER**



Red



Marine Green

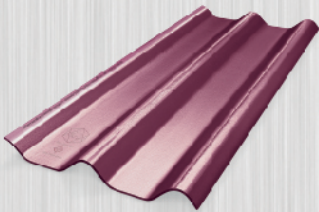
**BEST
SELLER**



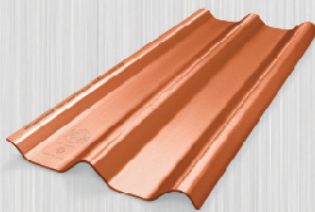
Cocoa



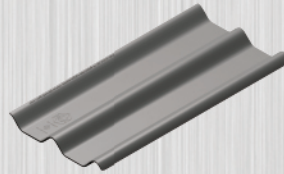
Light Blue



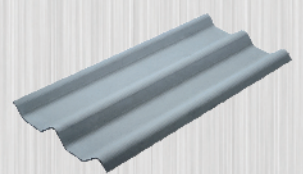
Shiny Pearl Purple



Shiny Pearl Orange



Grey



Cement



Cocoa



Brown

SCG Roman Tiles Round Ridge System

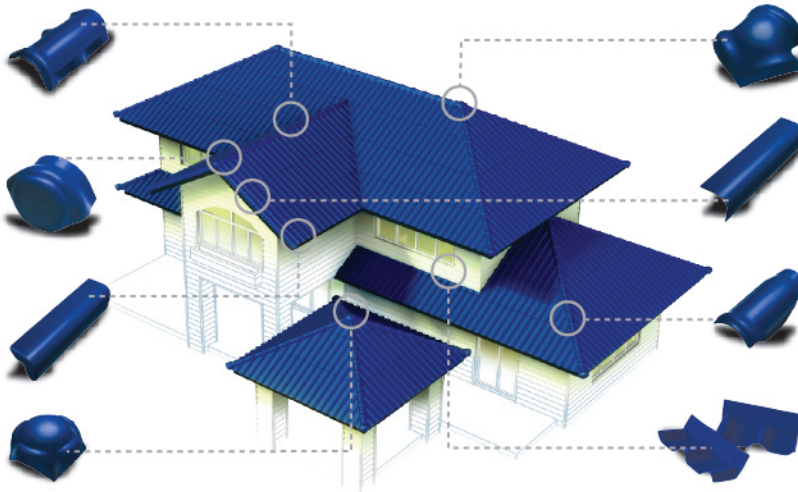
- **Perfect beauty for the whole roof** it is designed to snugly fit the curve of undulating roofing sheet at every point, at every joint.
- **Leak-proof, absent of soiling by surface layers of lime** no marks of scratches, absolute leak-proof and stronger.
- **Flawless beauty** with a wide variety of color.
- **Used with 20–40 degrees of roof pitch.**

Round Ridge
It is use to cover along the whole length of the ridge of the roof (2.2 pcs./ 1 m. of the roof ridge)

Round Hip End Ridge
It is use to cover the face of roof gable or to cover the edge of the roof ridge.

Barge End
It is used to adhere the last side cover in the area of the toothed lath of the gable-shaped roof.

Round 4 Ways Apex
It is used to cover the roof ridges on four sides that connects for the Hip roof style.



Round 3 Ways Apex
It is used to cover the area at which the roof ridges join at the ridge apex for Hip roof style.

Barge
It is used cover the area of the toothed lath of the gable-styled roof (2 pcs./1 m. Ridge)

Round Hip Ridge
It is used to cover throughout the ridge line (2.5 pcs./1 m. Ridge)

Wall Ridge
It is used to cover at the end of the tile on part that touches the wall (2.2 pcs./1 m. wall)

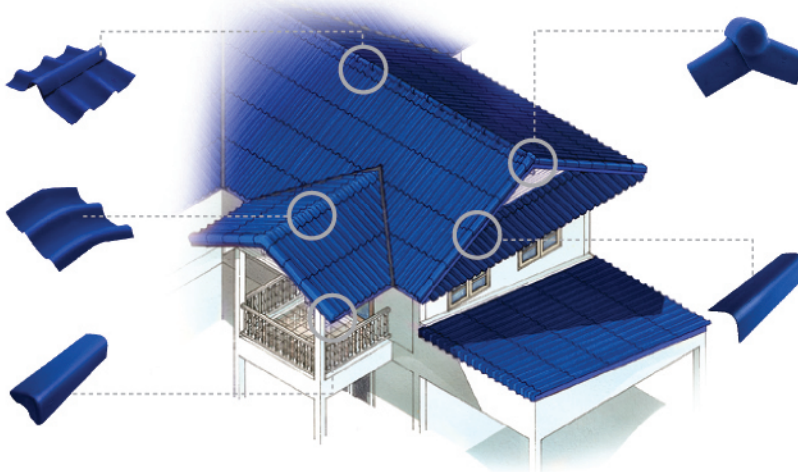
SCG Roman Adjustable Ridge System

- **Used with 15–40 degree of roof pitch**

Adjustable Angle Ridge
To cover the angle adjustment spin. It should cover the ridge of the roof with gradient of 15–40 degrees. (Standard colors only)

15–20 Degree Ridge
To cover the 15 and 20 degrees corner, it should cover the ridge of the roof with gradient of 15 and 20 degrees (Specific for grey cement)*

Barge End
It is used to cover the last side cover at the area of toothed lath of the gable roof.



Adjustable Ridge End
To cover the corner adjusting gable. It is used to cover the front of the gable for gable roof.

Barge
It is used to cover the toothed lath of the gable roof (2 Pcs./1 m. Wall)

WARNING

- Designed to use for residential or high rise building with recommended height level from ground to roof of not more than 23 meters.
- Products are advisable to use with qualified equipment from direct manufacturer. Applications for other purposes are not recommended.
- During installation, PPE for high rise work and standard movement supporting devices are highly recommended.
- Eating and inhaling of the dust from drilling, grinding, shearing & washing the materials are prohibited.

NOTICE

- SCG Fiber cement roof are designed & suitable for countries with a tropical climate only. If use outside Thailand it should follow the standard in such country and should be direct responsibility of the designer and the construction supervisor.
- The installation should follow the installation manual and use only the standard equipment.
- Installation manual of this product is always updated. The designer, construction supervisor and installer shall verify that all methods being used are following the most updated installation manual of this product. To verify they can visit our website: www.scgbuildingmaterials.com

All content, design, and layout are Copyright © 2017, SCG Cement-Building Materials All Rights Reserved, Reproduction in whole or part in any form or medium without specific written permission is prohibited.

0917